

Object 26, 2024

Powder-coated steel construction, clothing, bast
356 × 236 × 270 cm / 140.2 × 92.9 × 106.3 in



Ohne näheres Ende
FeldbuschWiesnerRudolph, Berlin, 2024



Detail



Detail

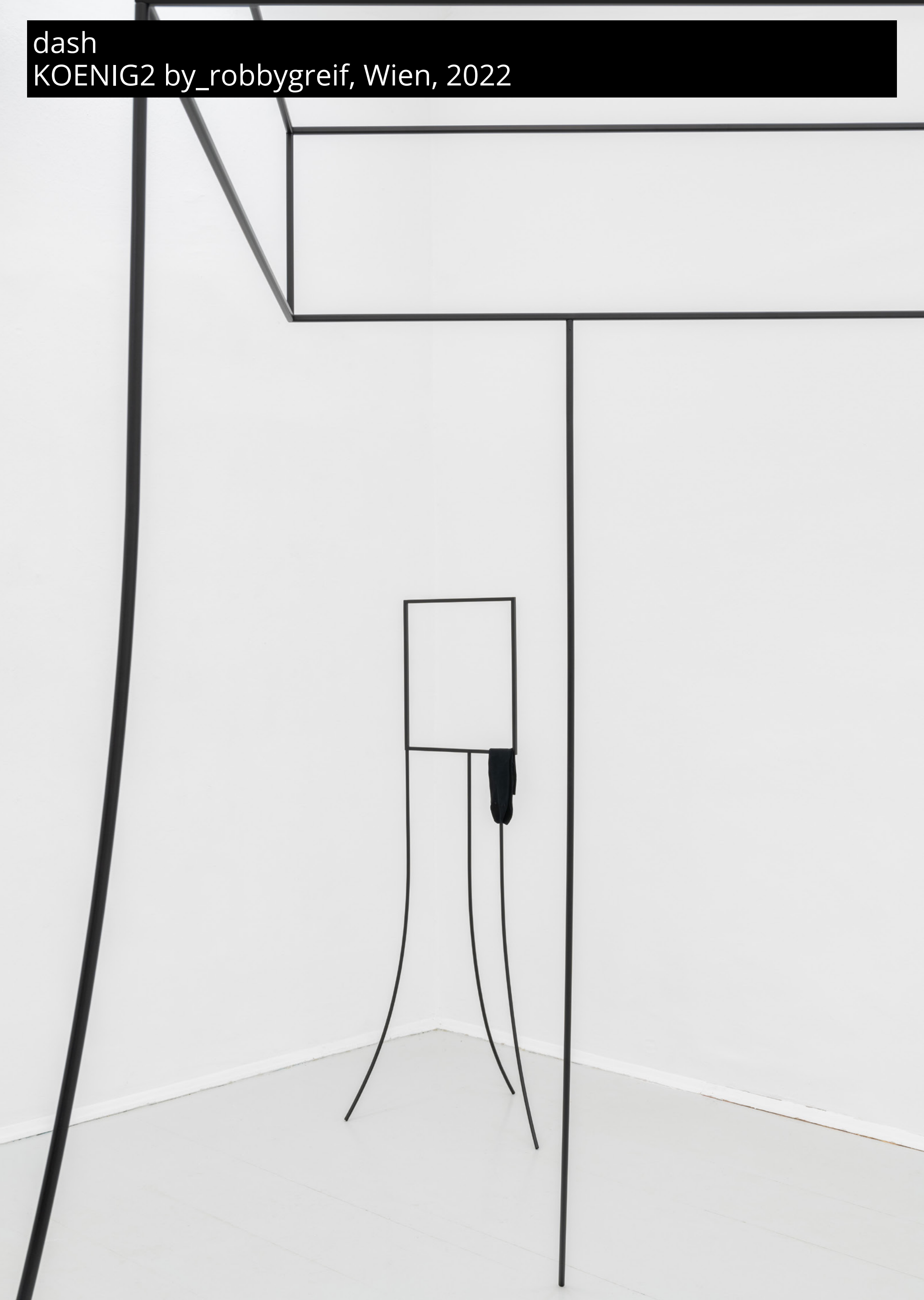


Object 24, 2022

Powder-coated steel construction, clothing
263 × 260 × 260 cm / 103.5 × 102.4 × 102.4 in



dash
KOENIG2 by_robbygreif, Wien, 2022



Object 25, 2022

Powder-coated steel construction, socks

168 × 75 × 50 cm / 66.1 × 29.5 × 19.7 in



Object 27, 2024
Powder-coated steel construction, socks
197 x 101 x 79 cm / 77.6 x 39.8 x 31.1 in



Object 23, 2020

Steel construction, clothing

164 × 297 × 120 cm / 64.6 × 169.3 × 47.2 in

YES-WHAT

FeldbuschWiesnerRudolph, Berlin, 2020



Object 23, 2020

YES-WHAT

FeldbuschWiesnerRudolph, Berlin, 2020



Object 22, 2019

Steel construction, clothing

235 × 193 × 120 cm / 92.6 × 76 × 47.2 in

YES-WHAT

FeldbuschWiesnerRudolph, Berlin, 2020



Object 22, 2019
Steel construction, clothing
235 × 193 × 120 cm / 92.6 × 76 × 47.2 in

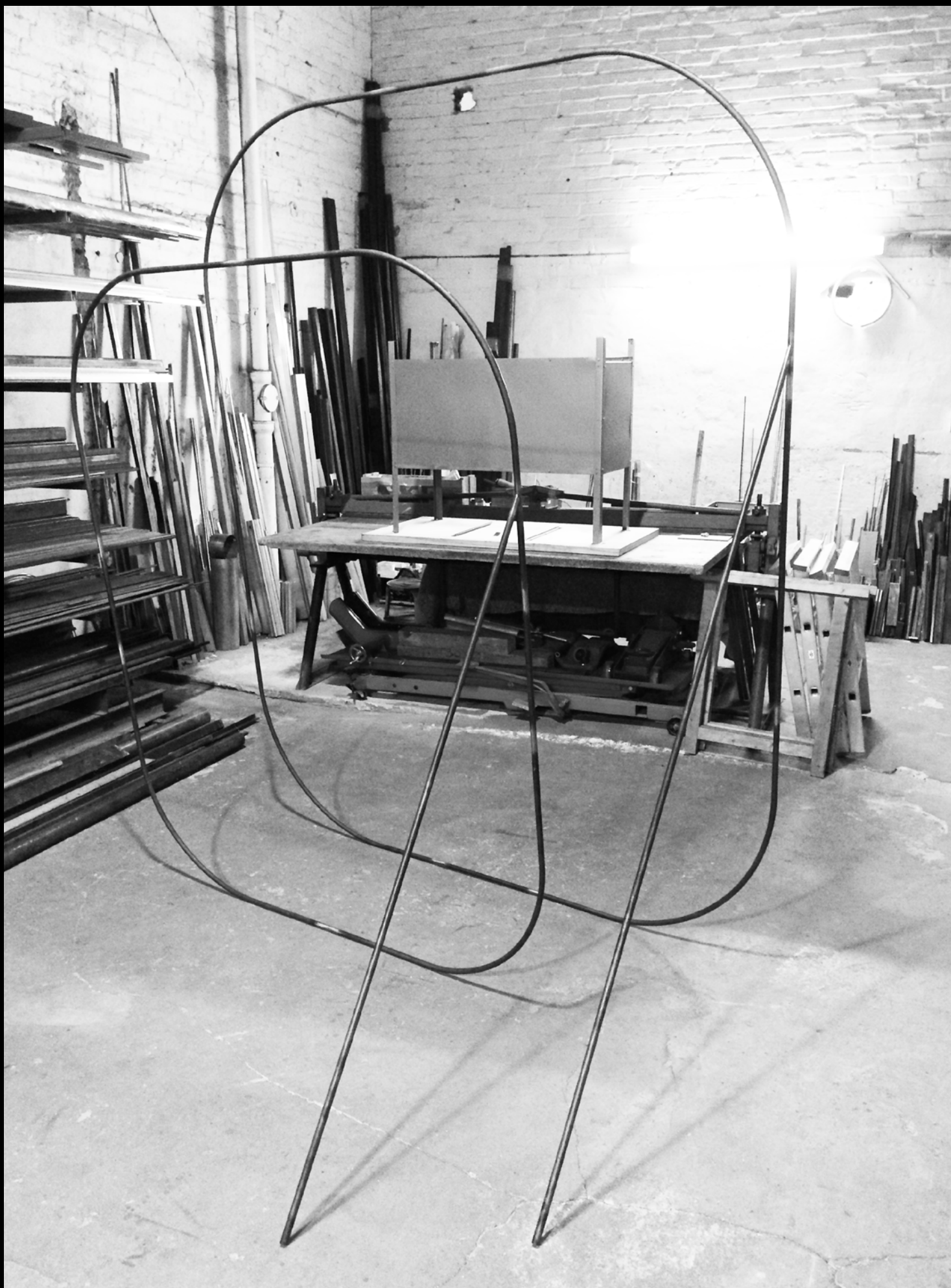
Kunst am Bau, Freiluftschau
Berlin, 2020



Object 21, 2019
Steel construction
188 × 154 × 95 cm / 74 × 60.6 × 37.4 in

Object 22, 2019
Steel construction
235 × 193 × 120 cm / 92.6 × 76 × 47.2 in

Production still at the metal workshop



Object 15, Colour Garden, 2016
3 Powder-coated steel poles, zipties
325 × 150 × 150 cm / 128 × 59.1 × 59.1 in



Laura Mars Gallery, Berlin, 2018
with Frank Maier

Laura



Object 20, Raum / Space, 2018
Powder-coated steel construction
200 × 175 × 95 cm / 78.7 × 69 × 37.4 in

Object 19, Raum / Space, 2018
Powder-coated steel construction
209 × 175 × 75 cm / 82.3 × 69 × 29.5 in

Laura, Laura Mars Gallery, Berlin, 2018





Object 18, Kubus / Cube, 2017
Powder-coated steel construction
280 × 78 × 78 cm / 110.2 × 30.7 × 30.7 in

Object 17, Kubus / Cube, 2017
Powder-coated steel construction, socks
266 × 98 × 98 cm / 104.7 × 38.6 × 38.6 in

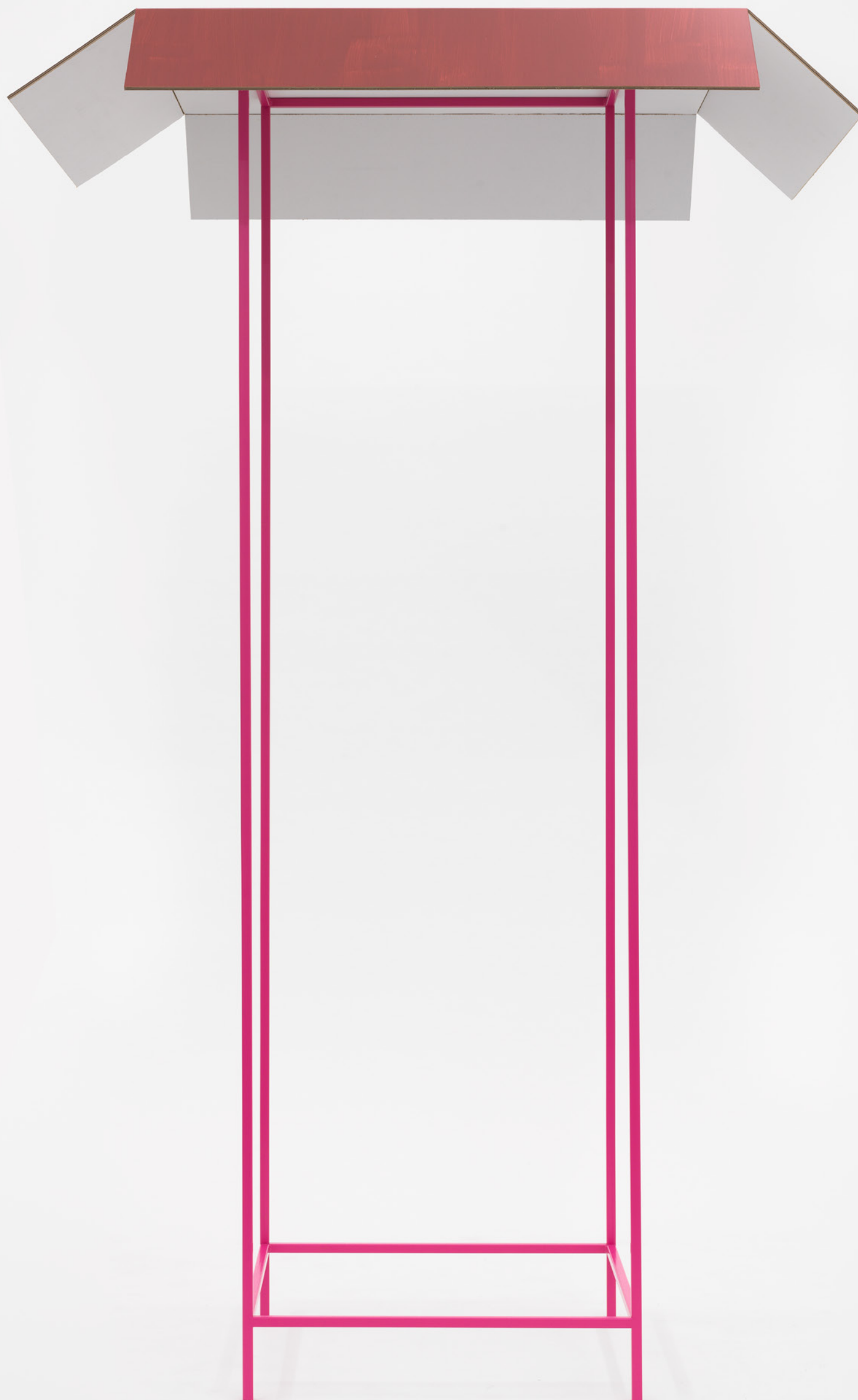


Poster #18

Detail

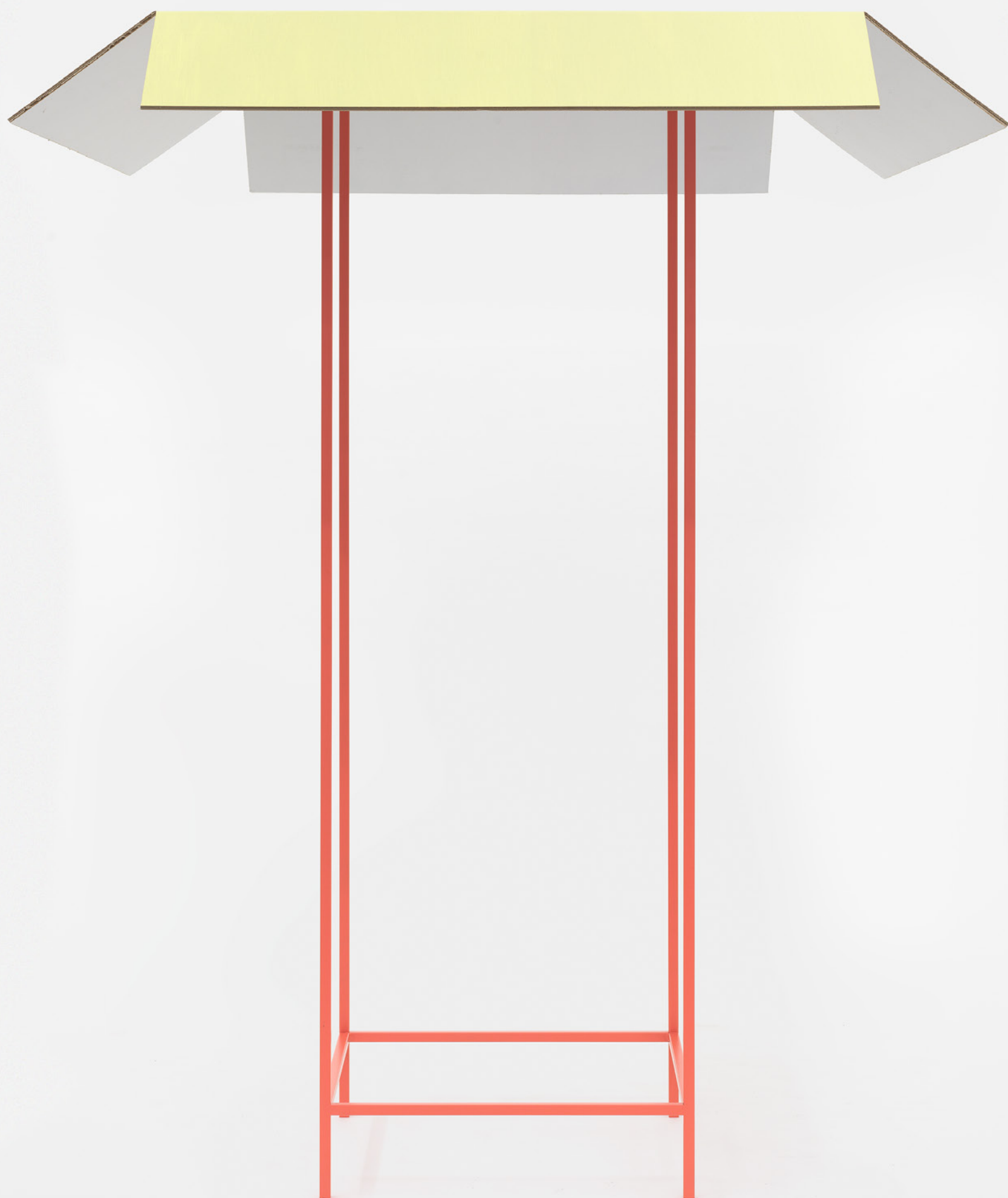
Object 04, Dust, 2011

Cardboard, painted, powder-coated steel construction, 1 part
300 × 130 × 130 cm / 118.1 × 51.2 × 51.2 in



Object 06, Dust, 2013

Cardboard, painted, powder-coated steel construction, 1 part
210 × 160 × 230 cm / 82.7 × 63 × 90.6 in



Object 04, Dust, 2011

Cardboard, painted, powder-coated steel construction, 2 parts
355 × 130 × 130 cm / 139.8 × 51.2 × 51.2 in

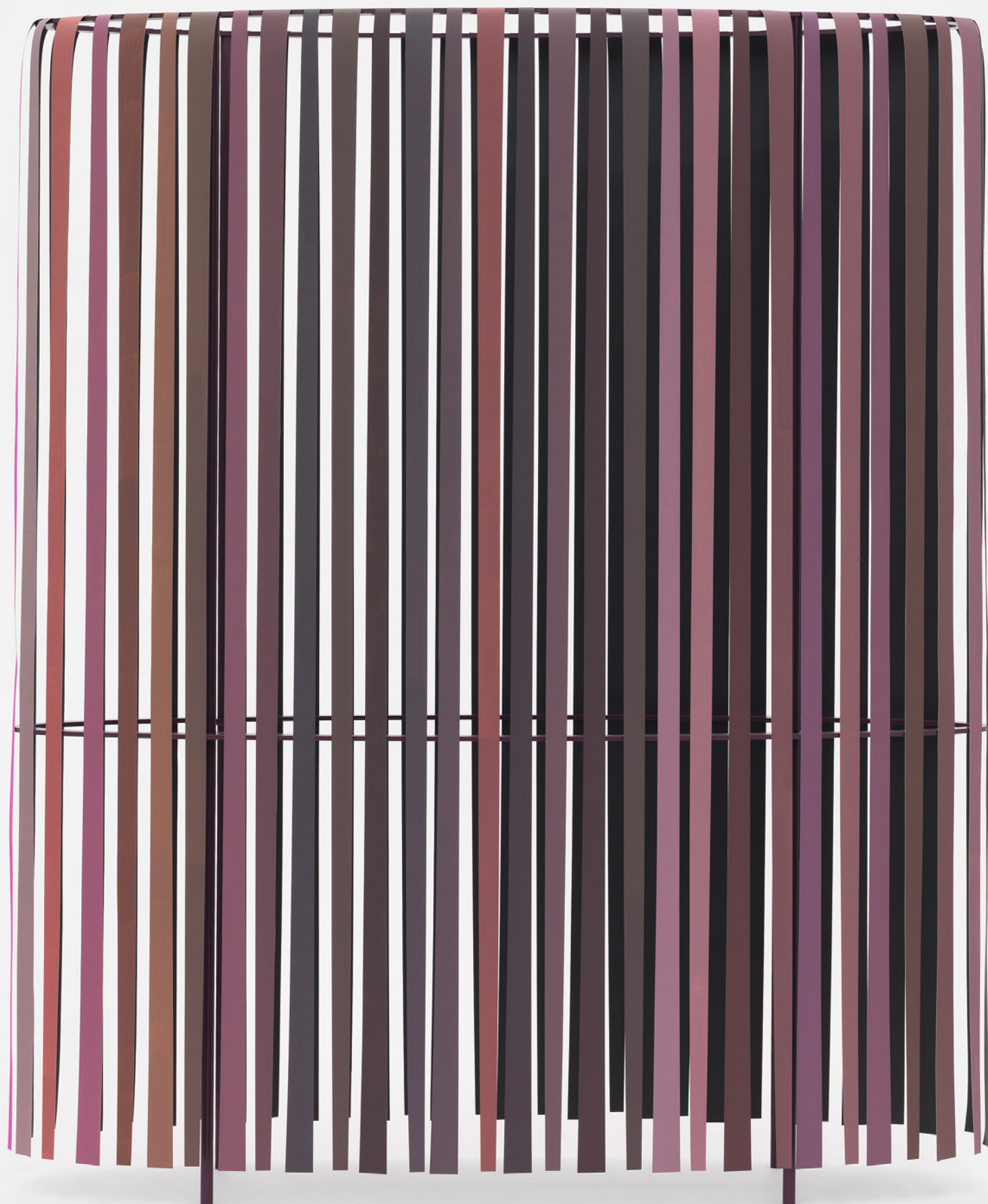
Orientierungsverlust und Ästhetik
Galerie Jette Rudolph, Berlin, 2011



Object 03, Scene at Night, nightside, 2010

Paper, painted, powder-coated steel construction, 58 parts

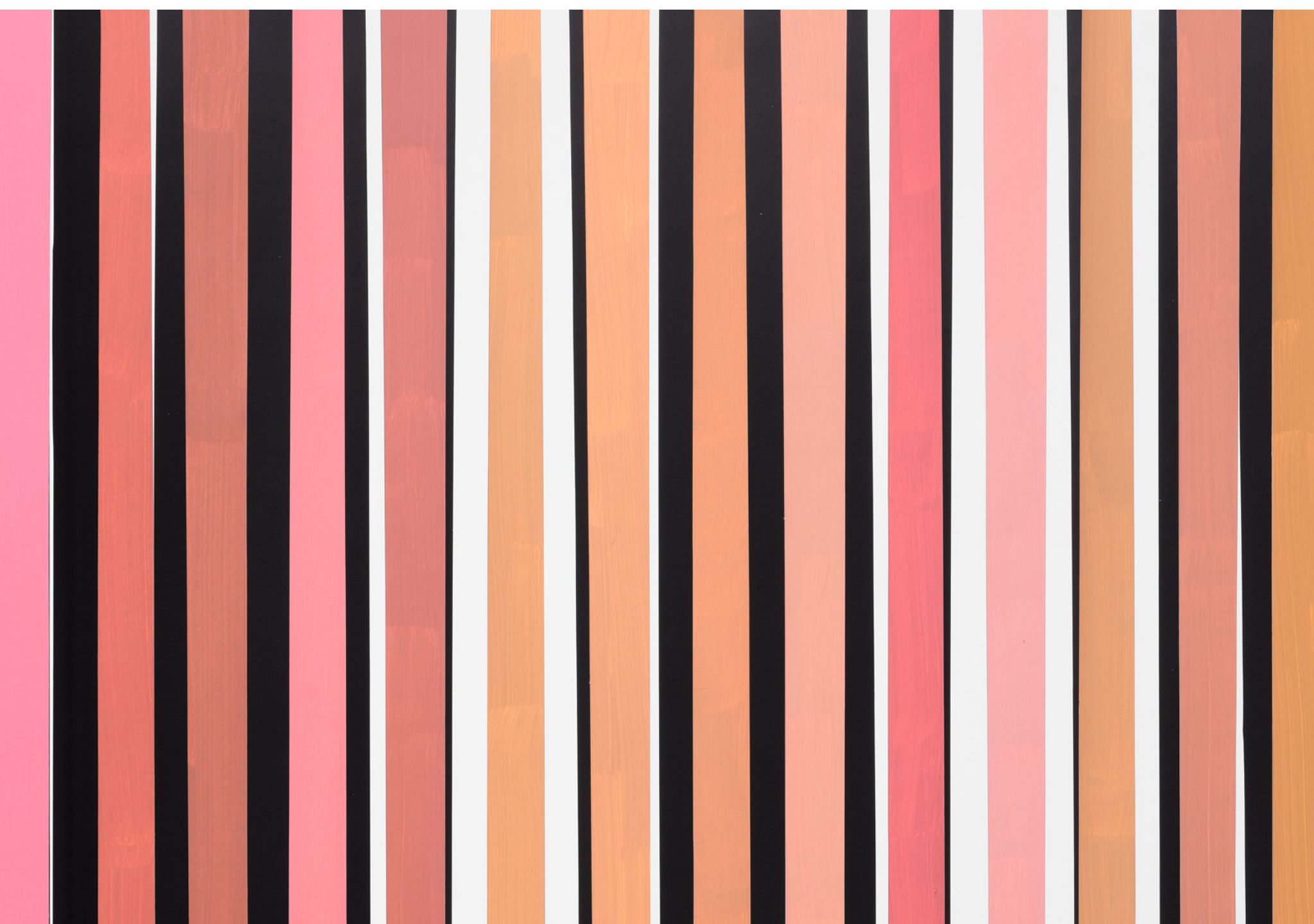
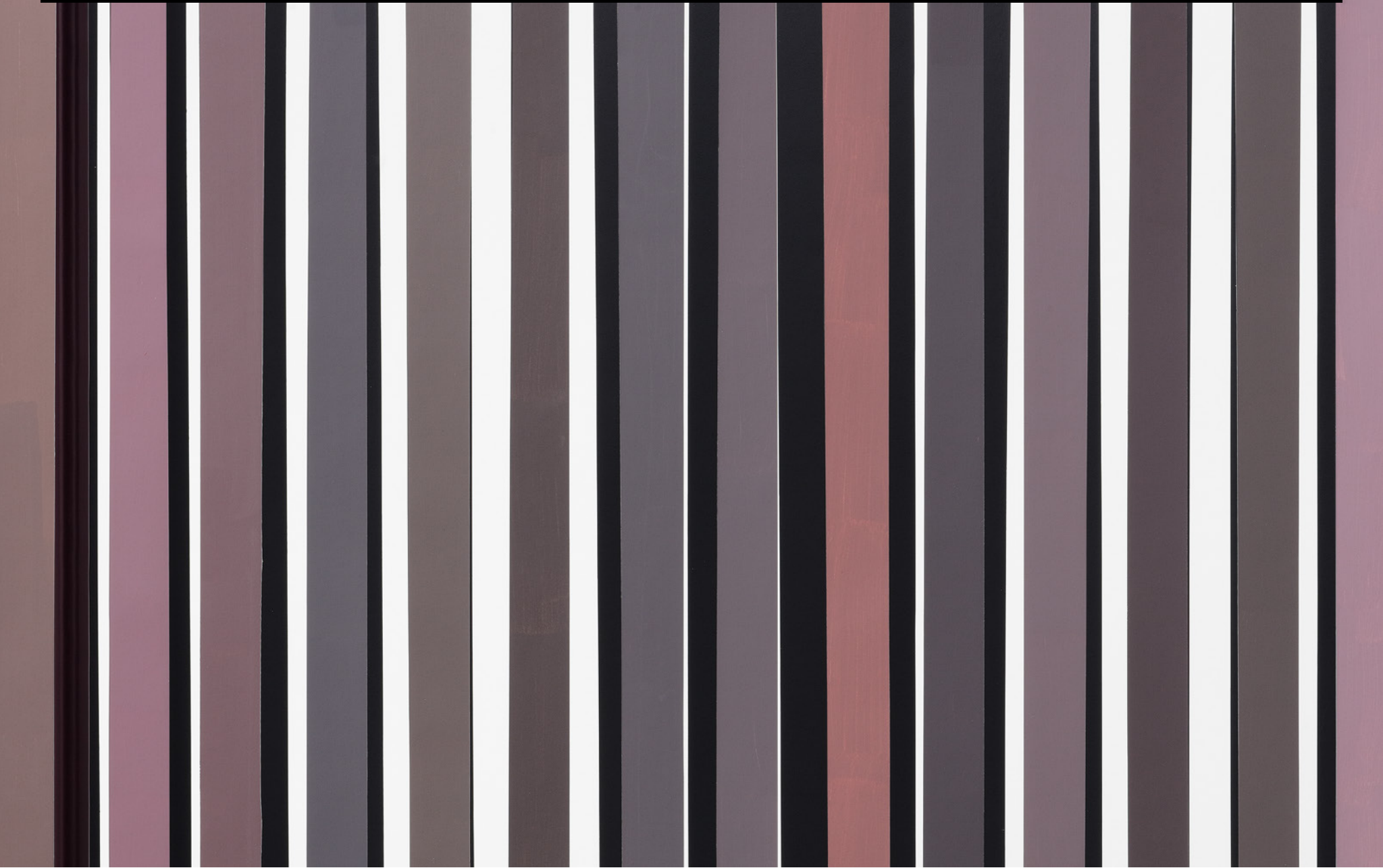
204 × 171 × 49 cm / 80.3 × 67.3 × 19.3 in



Object 03, Scene at Night, dayside



Details



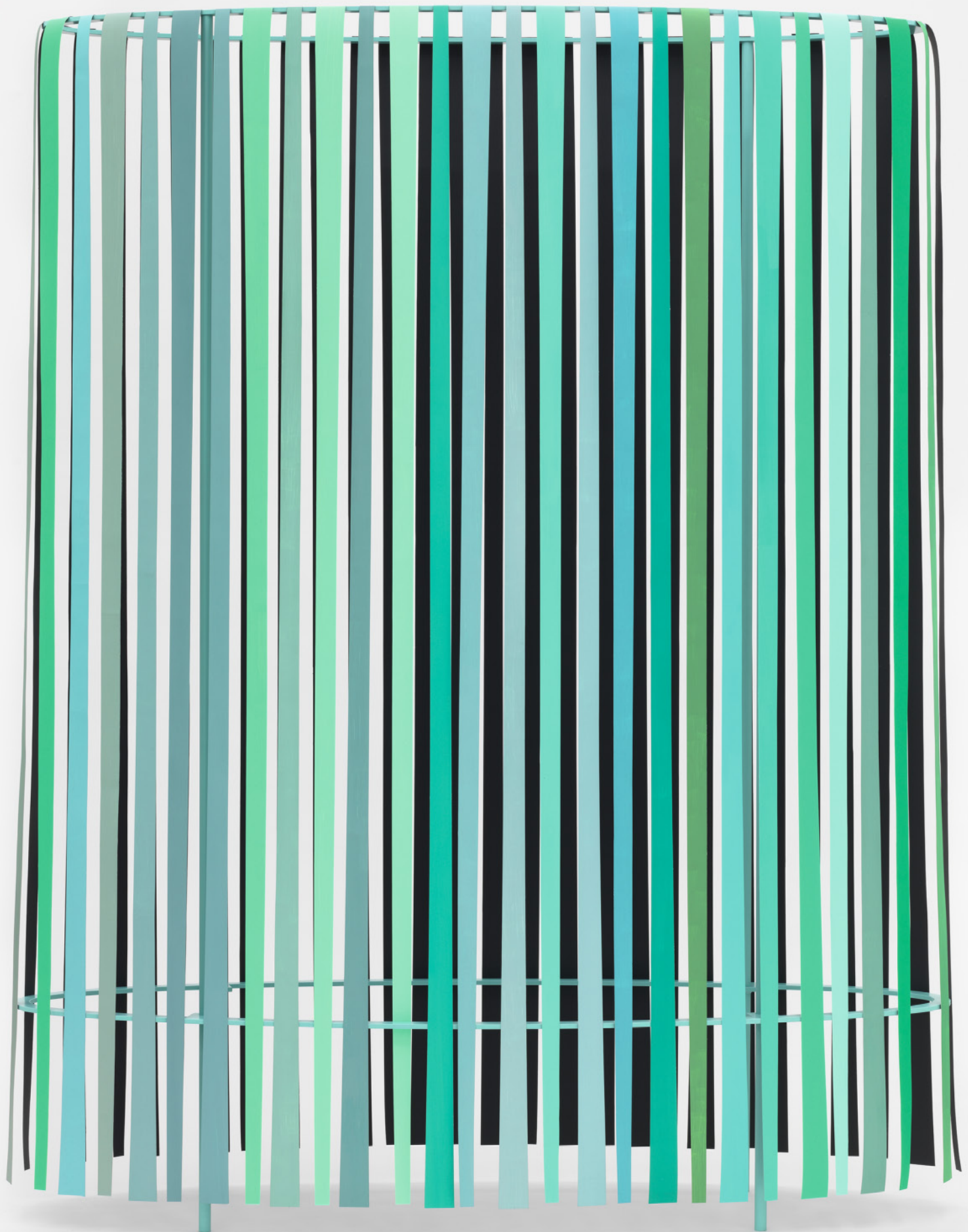
Object 05, Scene at Night, nightside, 2011

Paper, painted, powder-coated steel construction, 54 parts

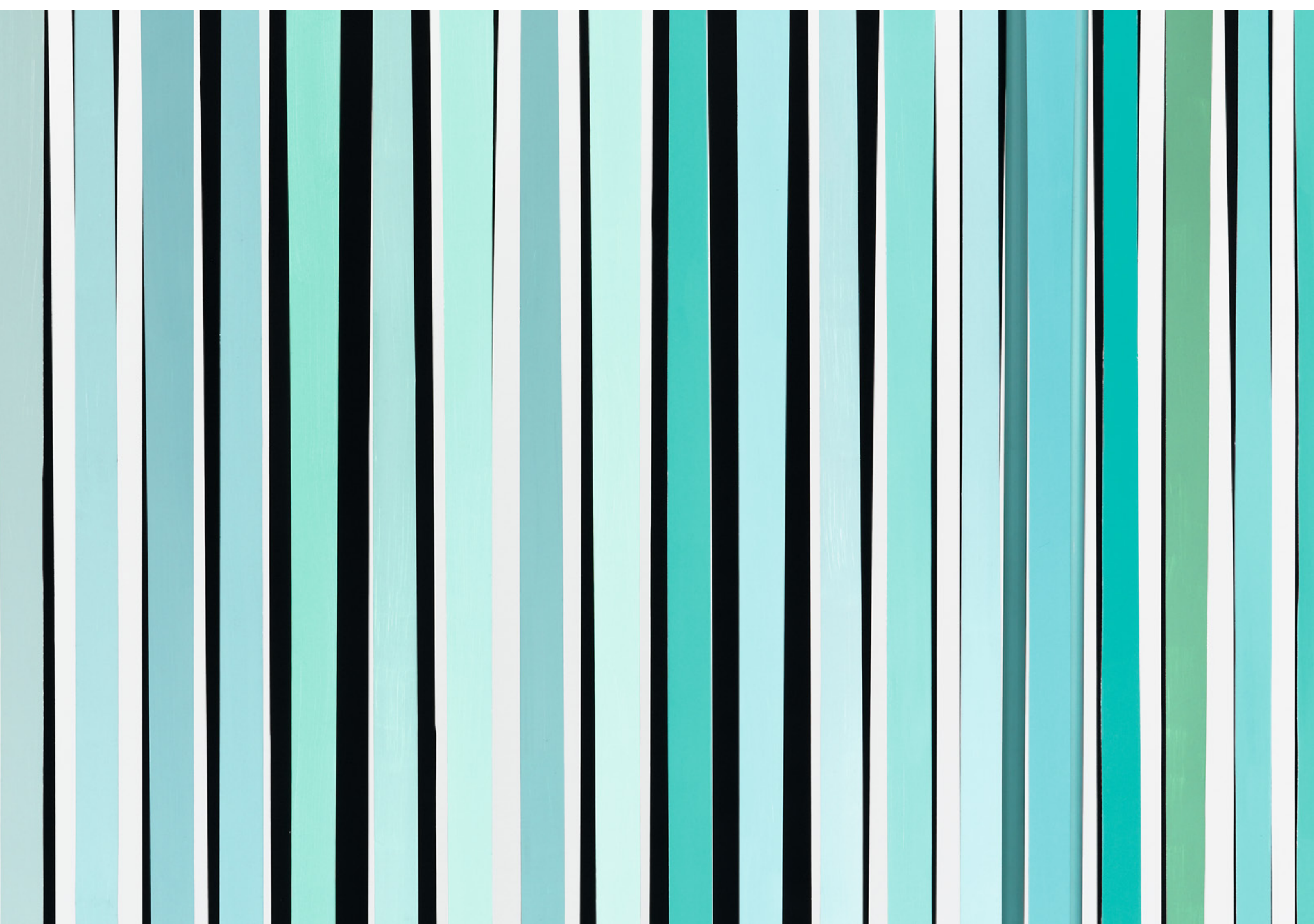
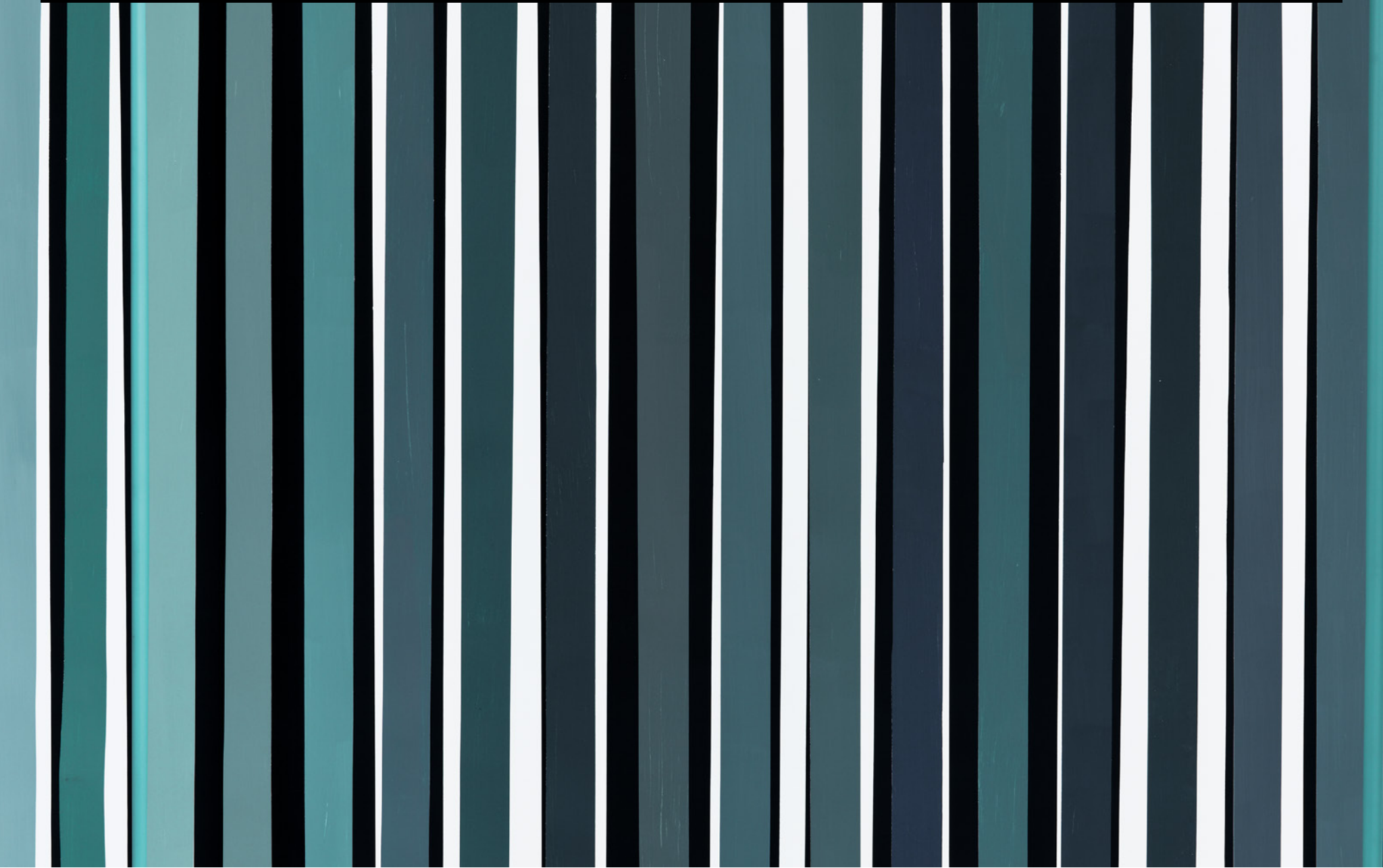
220 × 173 × 59 cm / 86.6 × 68.1 × 23.2 in



Object 05, Scene at Night, dayside



Details



Object 12, Scene at Night, nightside, 2014

Paper, painted, powder-coated steel construction, 20 parts

212 × 189 × 71 cm / 83.5 × 74.4 × 28 in



Object 12, Scene at Night, dayside



Details



Object 13, Scene at Night, nightside, 2015

Paper, painted, powder-coated steel construction, 22 parts

200 × 130 × 64 cm / 78.7 × 51.2 × 25.2 in



Object 13, Scene at Night, dayside



Object 13, Scene at Night



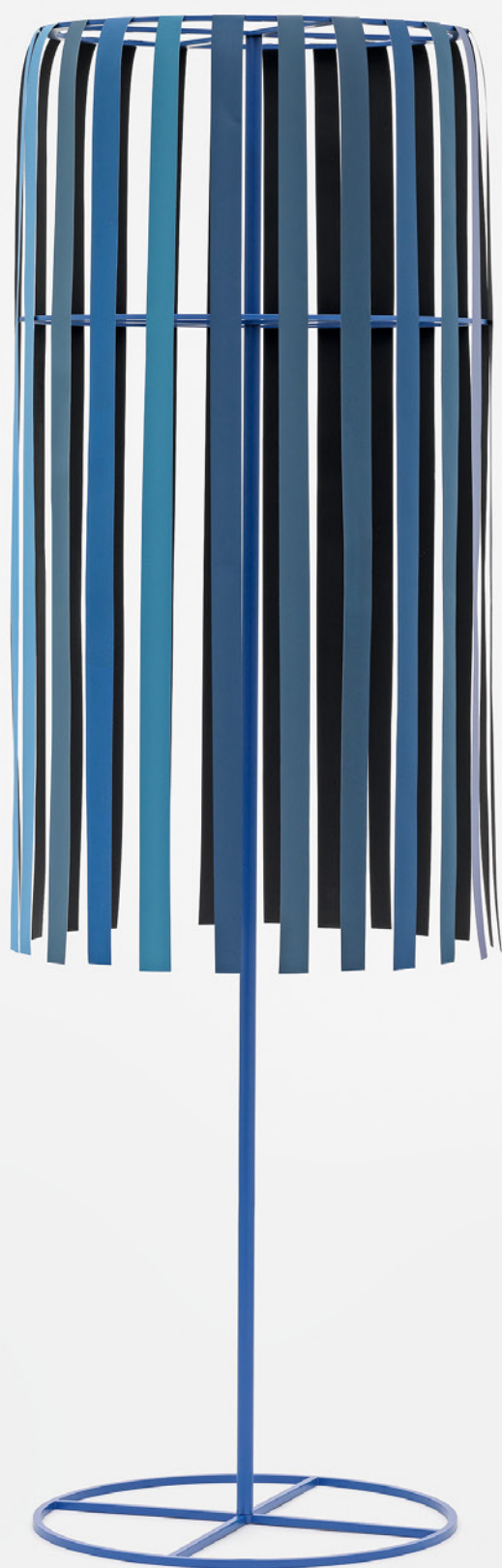
Object 13, Scene at Night, dayside



Object 16, Scene at Night, nightside, 2017

Paper, painted, powder-coated steel construction, 24 parts

180 × 57 × 57 cm / 72 × 22.4 × 22.4 in

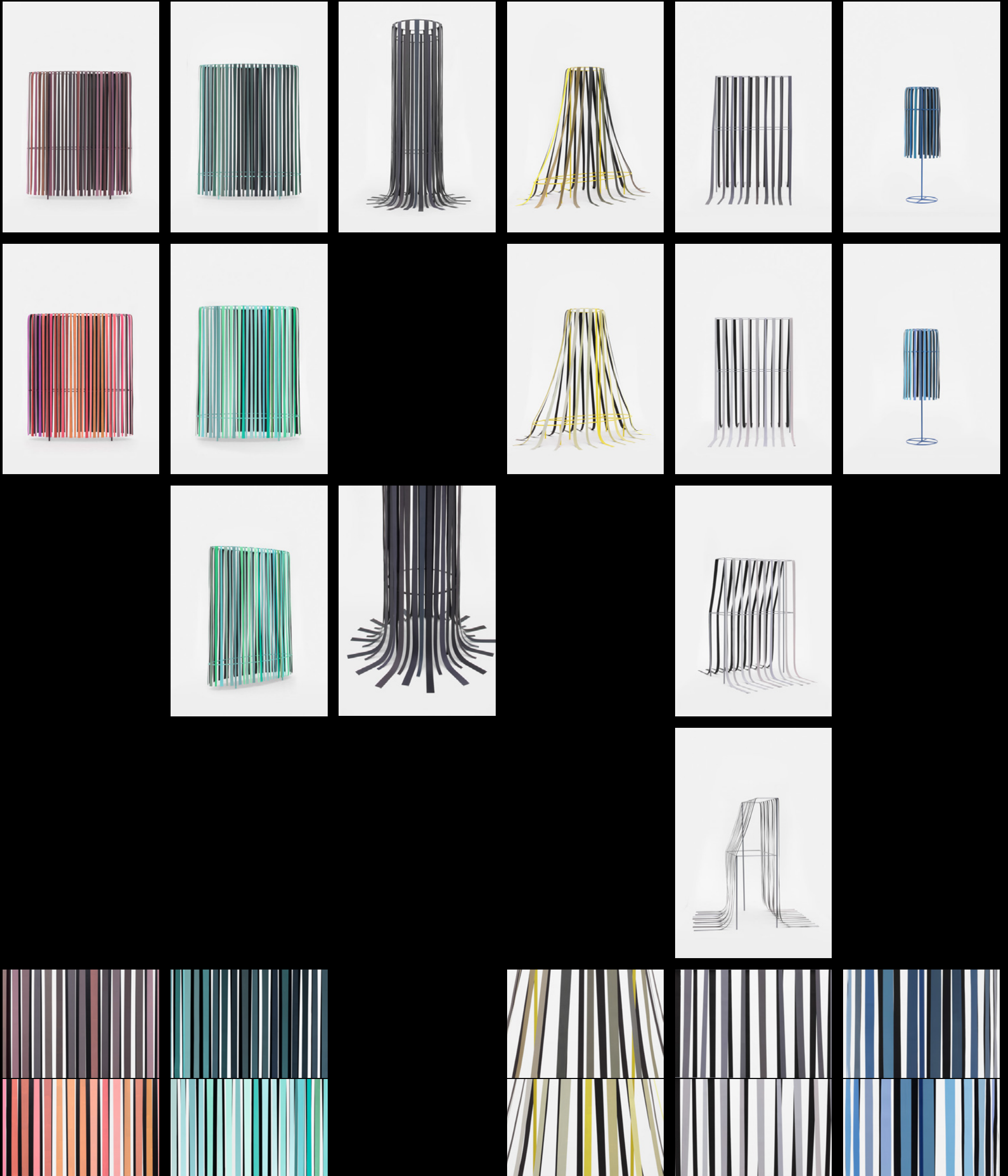


Object 16, Scene at Night, dayside



Details





Object 10, Wall, 2013

Cardboard, painted, powder-coated steel construction, 1 part
266 × 150 × 60 cm / 104.7 × 59 × 23.6 in



Object 10, Wall

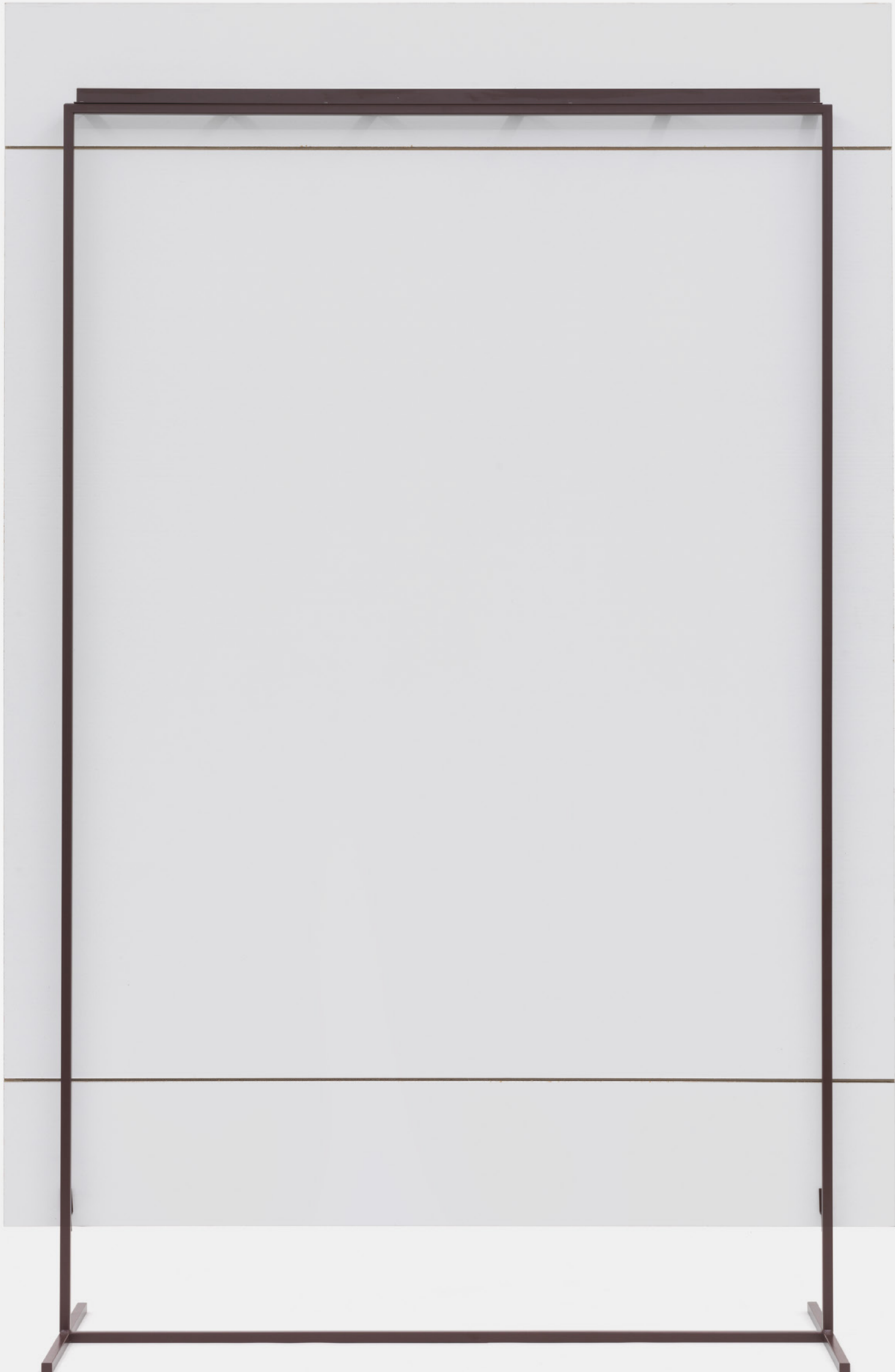


Object 08, Wall, 2013

Cardboard, painted, powder-coated steel construction, 1 part
266 × 177 × 60 cm / 104.7 × 69.7 × 23.6 in

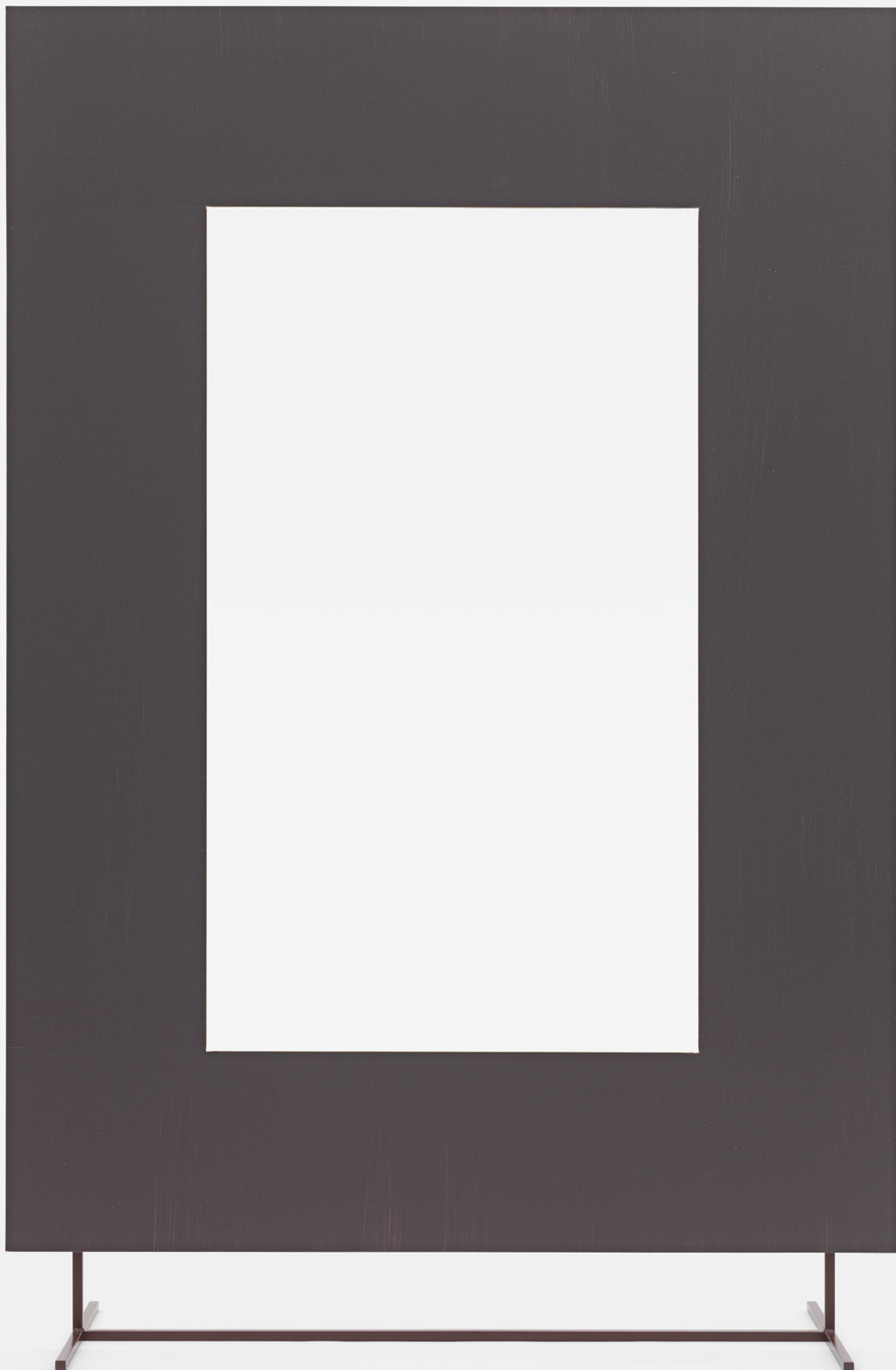


Object 08, Wall

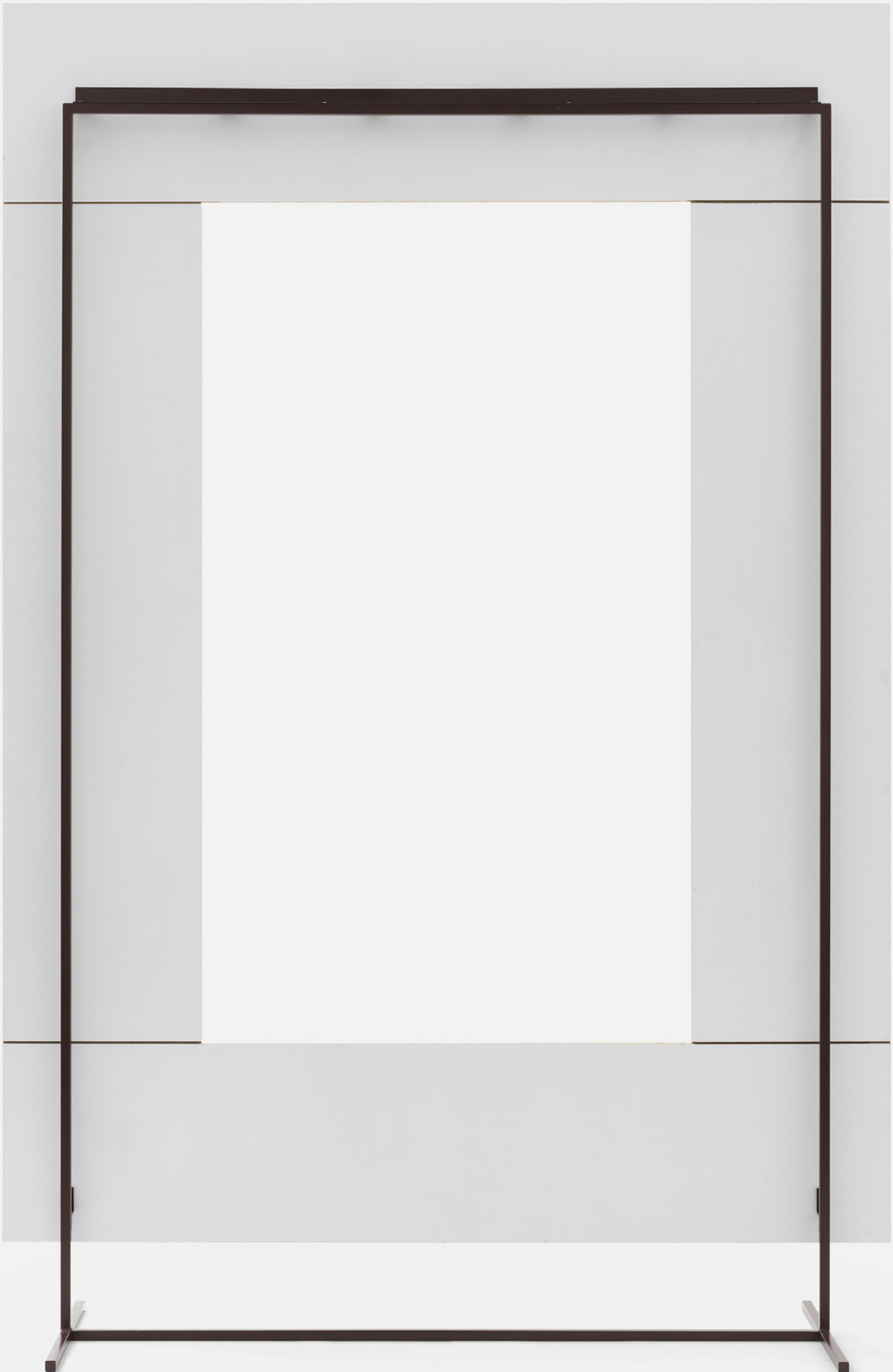


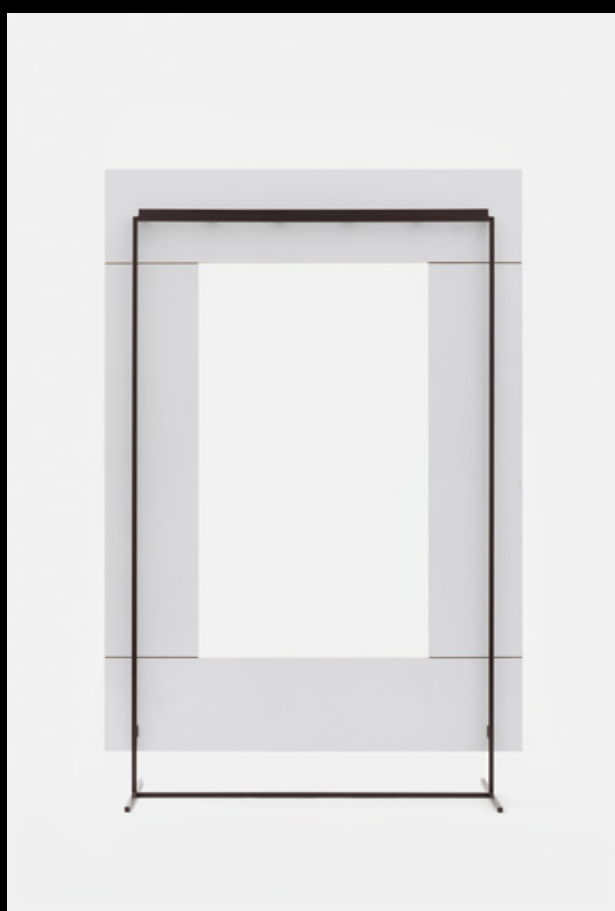
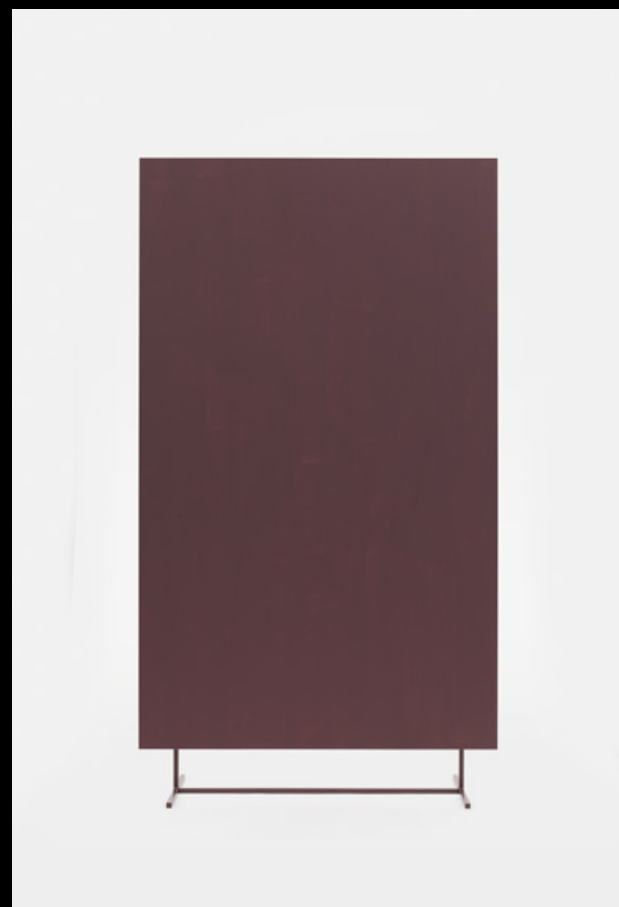
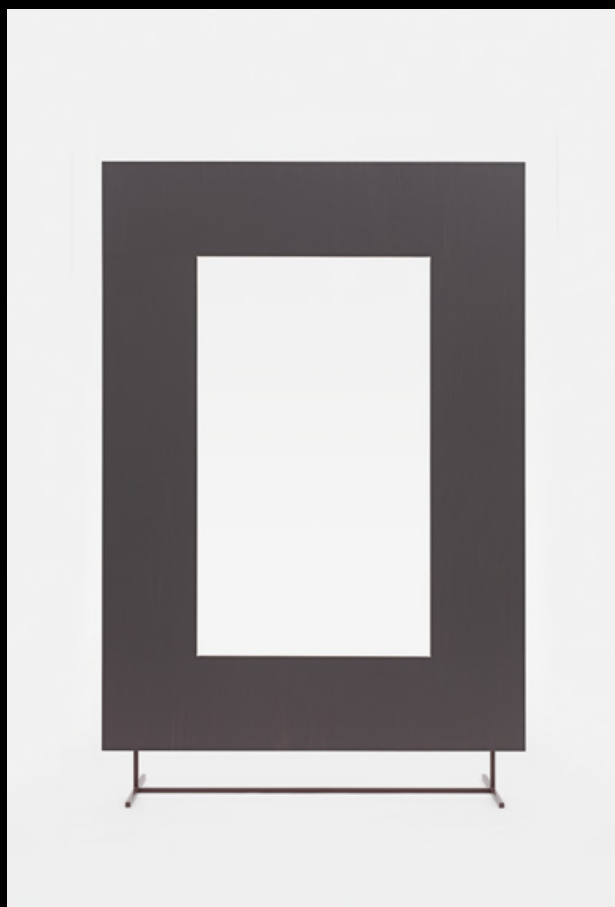
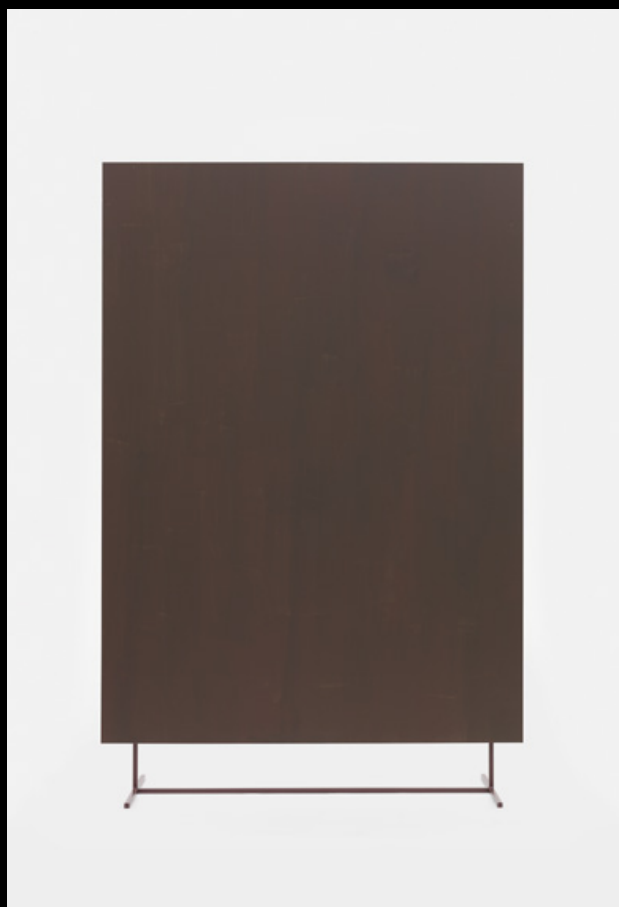
Object 09, Wall, 2013

Cardboard, painted, powder-coated steel construction, 1 part
266 × 177 × 60 cm / 104.7 × 69.7 × 23.6 in



Object 09, Wall





Objects, Wall, 2013

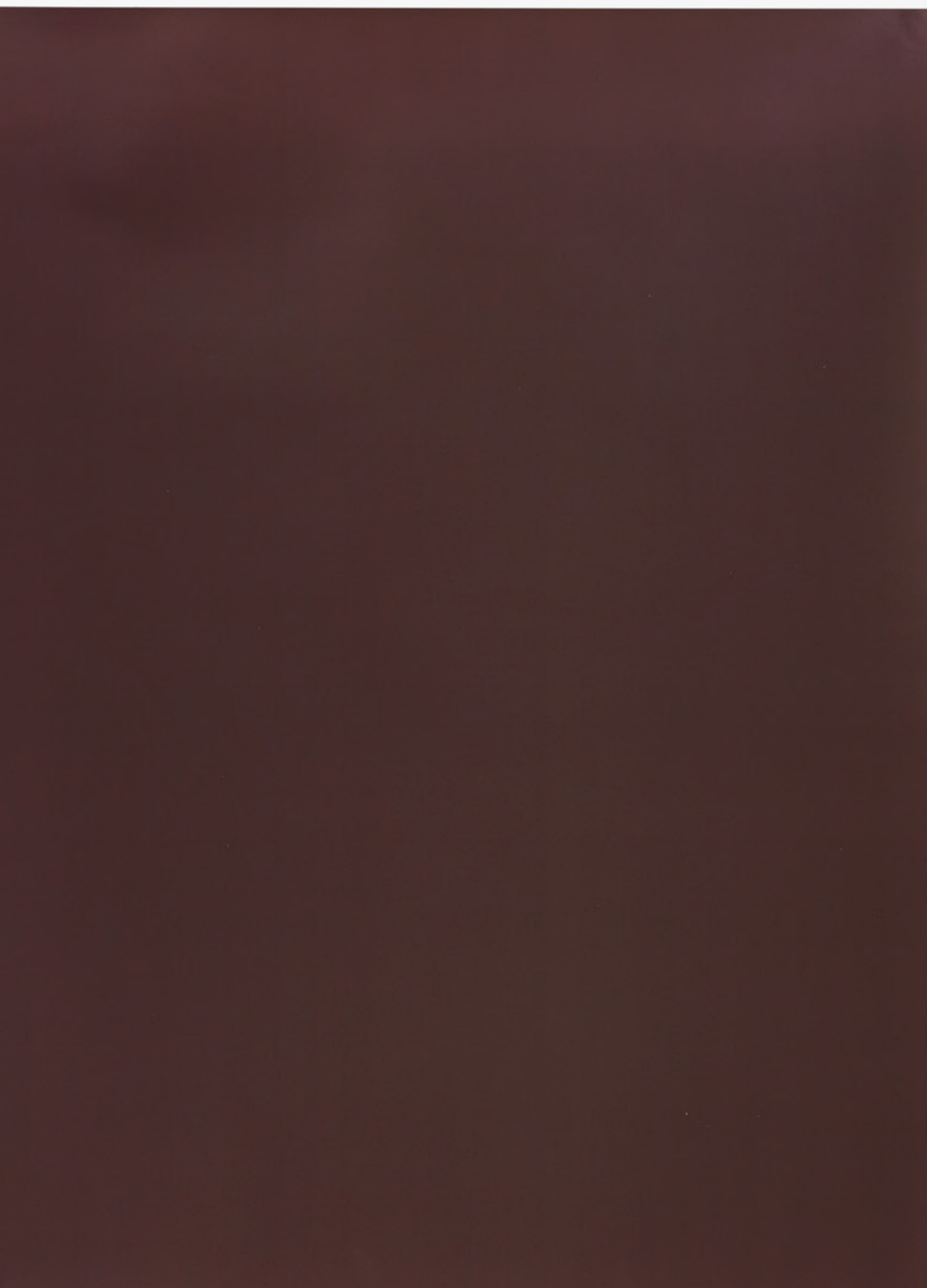
Versuchung
Stadtgalerie Saarbrücken, 2013



Objects, Wall, 2013

Versuchung
Stadtgalerie Saarbrücken, 2013





Poster #08 1 / 2 / 4 / 7

Details

Object 01, No Washing Machine, 2005
Cardboard, painted, powder-coated steel construction,
illuminant, 2 parts
270 × 90 × 90 cm / 106.3 × 35.4 × 35.4 in

We Got Beef
Villa Merkel, Esslingen, 2005



Object 01, No Washing Machine, 2005

Details

We Got Beef

Villa Merkel, Esslingen, 2005



Mars Dust, 2005

Steel sheet, lacquered and painted, powder-coated steel
construction, 11 parts

270 × 400 × 240 cm / 106.3 × 157.5 × 94.5 in

We Got Beef

Villa Merkel, Esslingen, 2005



Mars Dust, 2005

We Got Beef
Villa Merkel, Esslingen, 2005





Detail



Mars Dust, 2005

3 Steel sheets, lacquered and painted, steel construction

270 × 400 × 240 cm / 106.3 × 157.5 × 94.5 in

Production still at the metal workshop, Axel Tim and children,
Paul Klier



Mars Dust 2, 2006

Aluminum sheet, anodized and painted, powder-coated steel
construction, 4 parts

70 × 300 × 50 cm / 27.6 × 118.1 × 19.7 in



Mars Dust 2, 2006



Johnny Got a Gun 3, 2006

Oil on wood, powder-coated steel connecting parts, 20 parts
280 × 500 × 300 cm / 110.2 × 196.9 × 118.1 in

He said, FS.ART

Berlin, 2006



Johnny Got a Gun 3, 2006



Ghost Going Abstract 7, 2003

Mixed media on aluminum, 15 parts, on a black wall

319 × 291 cm / 125.6 × 114.6 in

VON HOCKNEY BIS HOLBEIN. Die Sammlung Würth in Berlin
Martin Gropius Bau, Berlin, 2015

